

\$555,810 - 5100 Parc Runis Way, Beaumont

MLS® #E4428127

\$555,810

3 Bedroom, 2.50 Bathroom, 1,703 sqft
Single Family on 0.00 Acres

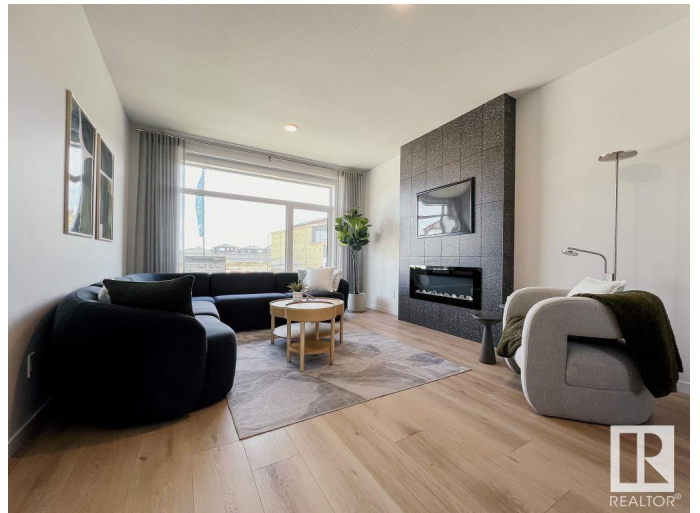
Elan, Beaumont, AB

Welcome to the stunning Versa Nixon 20, a laned home that perfectly blends functionality and modern design. The main floor features a versatile den – ideal for a home office, playroom, or guest space – offering flexibility to suit your lifestyle needs. Upstairs you will find a spacious bonus room perfect for family movie nights or play area or additional living space. The open concept main floor is bright and inviting, with thoughtful finishes throughout. **UNDER CONSTRUCTION!**
photos are for representation only. Colors and finishings may vary

Built in 2025

Essential Information

| | |
|----------------|------------------------|
| MLS® # | E4428127 |
| Price | \$555,810 |
| Bedrooms | 3 |
| Bathrooms | 2.50 |
| Full Baths | 2 |
| Half Baths | 1 |
| Square Footage | 1,703 |
| Acres | 0.00 |
| Year Built | 2025 |
| Type | Single Family |
| Sub-Type | Detached Single Family |
| Style | 2 Storey |



Status Active

Community Information

Address 5100 Parc Runis Way
Area Beaumont
Subdivision Elan
City Beaumont
County ALBERTA
Province AB
Postal Code T4X 3E4

Amenities

Amenities Deck, Front Porch, See Remarks
Parking Parking Pad Cement/Paved

Interior

Interior Features ensuite bathroom
Appliances Dishwasher-Built-In, Microwave Hood Fan, Refrigerator, Stove-Electric
Heating Forced Air-1, Natural Gas
Fireplace Yes
Fireplaces Insert
Stories 2
Has Basement Yes
Basement Full, Unfinished

Exterior

Exterior Wood, Vinyl
Exterior Features Schools, See Remarks
Roof Asphalt Shingles
Construction Wood, Vinyl
Foundation Concrete Perimeter

School Information

Elementary École Bellevue School
Middle École Dansereau Meadows
High École Secondaire Beaumont

Additional Information

Date Listed March 25th, 2025

Days on Market 28

Zoning Zone 82

DATA IS DEEMED RELIABLE BUT IS NOT GUARANTEED ACCURATE BY THE REALTORS® ASSOCIATION OF EDMONTON. COPYRIGHT 2025 BY THE REALTORS® ASSOCIATION OF EDMONTON. ALL RIGHTS RESERVED. Trademarks are owned or controlled by the Canadian Real Estate Association (CREA) and identify real estate professionals who are members of CREA (REALTOR®, REALTORS®) and/or the quality of services they provide (MLS®, Multiple Listing Service®)

Listing information last updated on April 22nd, 2025 at 9:47am MDT