

\$640,000 - 37 Meadowgrove Lane, Spruce Grove

MLS® #E4428024

\$640,000

4 Bedroom, 3.00 Bathroom, 2,161 sqft

Single Family on 0.00 Acres

McLaughlin_SPGR, Spruce Grove, AB

This beautiful open to above, upgraded home features 4 bedrooms, 3 baths, a bonus room and a Study table. The main floor boasts luxury vinyl plank flooring, a versatile bedroom/den, a Full Washroom, a spacious family room and cozy fireplace. The modern kitchen is designed for both cooking and entertaining, complete with high-end cabinetry, quartz countertops, a large island, stainless steel appliances, and a pantry. A bright dining area with ample natural light is perfect for gatherings, while a convenient full bath completes this level. PROPERTY IS UNDER CONSTRUCTION AND PHOTOS ARE FROM SIMILAR HOME. COLOURS MAY VARY.

Upstairs, the primary suite offers a 5-piece ensuite and a spacious walk-in closet. Two additional bedrooms, a full bath, study table, a bonus room, and a laundry room provide plenty of space for the whole family. The unfinished basement comes with a separate entrance, offering endless possibilities for customization. Additional

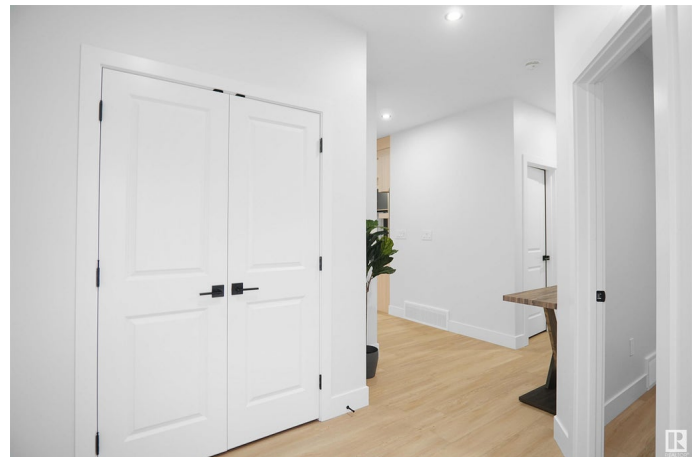
Features: Deck, Wireless Bluetooth Speakers, Gas Hookup for BBQ.

Built in 2025

Essential Information

MLS® # E4428024

Price \$640,000



Bedrooms	4
Bathrooms	3.00
Full Baths	3
Square Footage	2,161
Acres	0.00
Year Built	2025
Type	Single Family
Sub-Type	Detached Single Family
Style	2 Storey
Status	Active

Community Information

Address	37 Meadowgrove Lane
Area	Spruce Grove
Subdivision	McLaughlin_SPGR
City	Spruce Grove
County	ALBERTA
Province	AB
Postal Code	T7X 0W2

Amenities

Amenities	Deck, Detectors Smoke, No Animal Home, No Smoking Home, Natural Gas BBQ Hookup
Parking	Double Garage Attached
Is Waterfront	Yes

Interior

Interior Features	ensuite bathroom
Appliances	Dishwasher-Built-In, Dryer, Garage Control, Garage Opener, Refrigerator, Stove-Electric, Washer
Heating	Forced Air-1, Natural Gas
Fireplace	Yes
Fireplaces	Glass Door
Stories	2
Has Basement	Yes
Basement	Full, Unfinished

Exterior

Exterior	Wood, Stone, Vinyl
----------	--------------------

Exterior Features Creek, Golf Nearby, Park/
Shopping Nearby

Roof Asphalt Shingles

Construction Wood, Stone, Vinyl

Foundation Concrete Perimeter



Additional Information

Date Listed March 28th, 2025

Days on Market 24

Zoning Zone 91

DATA IS DEEMED RELIABLE BUT IS NOT GUARANTEED ACCURATE BY THE REALTORS® ASSOCIATION OF EDMONTON. COPYRIGHT 2025 BY THE REALTORS® ASSOCIATION OF EDMONTON. ALL RIGHTS RESERVED.Trademarks are owned or controlled by the Canadian Real Estate Association (CREA) and identify real estate professionals who are members of CREA (REALTOR®, REALTORS®) and/or the quality of services they provide (MLS®, Multiple Listing Service®)

Listing information last updated on April 21st, 2025 at 7:02pm MDT